



**CAIN INDUSTRIES** combustion exhaust heat transfer products for diesel and gas engines. Exhaust to hot water and exhaust to steam heat recovery systems. [www.cainind.com](http://www.cainind.com)



**ENGINEER & COMPRESSOR ACCESSORIES** manufactures UL listed day tanks, double-wall base fuel tanks and accessories for engine-generator sets. [www.daytank.com](http://www.daytank.com)



**EATON** offers a full line of Contactor and Breaker UL1008 ATs from 40 to 4,000 amps. Eaton also offers a choice of either breaker, contactor or double throw switch designs. [www.eaton.com](http://www.eaton.com)



**ENERCON ENGINEERING** manufactures quality switchgear, controls, packaging, assembling and high-grade SCADA control and monitoring systems. Enercon provides complete factory testing and field services on their products. [www.enercon-eng.com](http://www.enercon-eng.com)

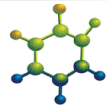


**HARCO MANUFACTURING** produces premium engine exhaust silencers, spark arrestors, and numerous exhaust system components. [www.harcomfg.com](http://www.harcomfg.com)



**Johnson Matthey Catalysts**

**JOHNSON MATTHEY** stationary emission control products including 3-way catalysts, oxidation catalysts, particulate filters and SCR systems. [www.jmcatalysts.com](http://www.jmcatalysts.com)



**MECC ALTE** is a manufacturer of portable, industrial and marine alternators from 5 kVA to 3000 kVA, two and four pole. [www.meccalte.com](http://www.meccalte.com)



**MODERN WELDING Co.**, above ground UL2085 Fireguard fuel storage tanks and accessories. [www.modweldco.com](http://www.modweldco.com)

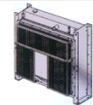


**MUELLER**

**MUELLER HEAT TRANSFER** manufactures gasketed plate and frame heat exchangers. [www.muel.com](http://www.muel.com)



**ROCORE INDUSTRIES, INC.** manufactures numerous engine driven and remote mounted radiators for stationary engines. [www.rocore.com](http://www.rocore.com)



**SBS (STORAGE BATTERY SYSTEMS)** supplies and manufactures NiCad batteries, racks, enclosures, charging systems and testing equipment. [www.sbsbattery.com](http://www.sbsbattery.com)



**SIMPLEX** manufactures a complete line of UL Listed load banks including stationary, portable and radiator mounted. Unit mounted or remote controls can be manually activated or fully automatic. Also manufactures fuel supply systems for delivery, filtering, monitoring and storing of fuel. [www.simplexdirect.com](http://www.simplexdirect.com)



**WOODWARD** is recognized as a leader in the field of advanced generation and distribution controls and monitoring. With over 135 years of experience, Woodward offers products for wind, switchgear, power generation, marine and petrochemical markets. [www.woodward.com](http://www.woodward.com)

